



Fostering recovery, building independence, and changing destinies

Coleman Crisis Services



- 24/7 Access Center
 - Anyone can walk in 24/7 and be seen by a licensed clinician (regardless of age and/or payer source)
- Mobile Crisis Services
 - Licensed clinician will respond in the community to anyone in crisis (assuming staffing is available)
- Crisis Stabilization Unit
 - Voluntary 11 bed unit for adults 18 and over
 - Provide short term stabilization when hospitalization is not required
 - Services Provided:
 - Psychiatry
 - Counseling
 - Nursing
 - Case Management
 - Peer Support
 - Group

Coleman Crisis Services

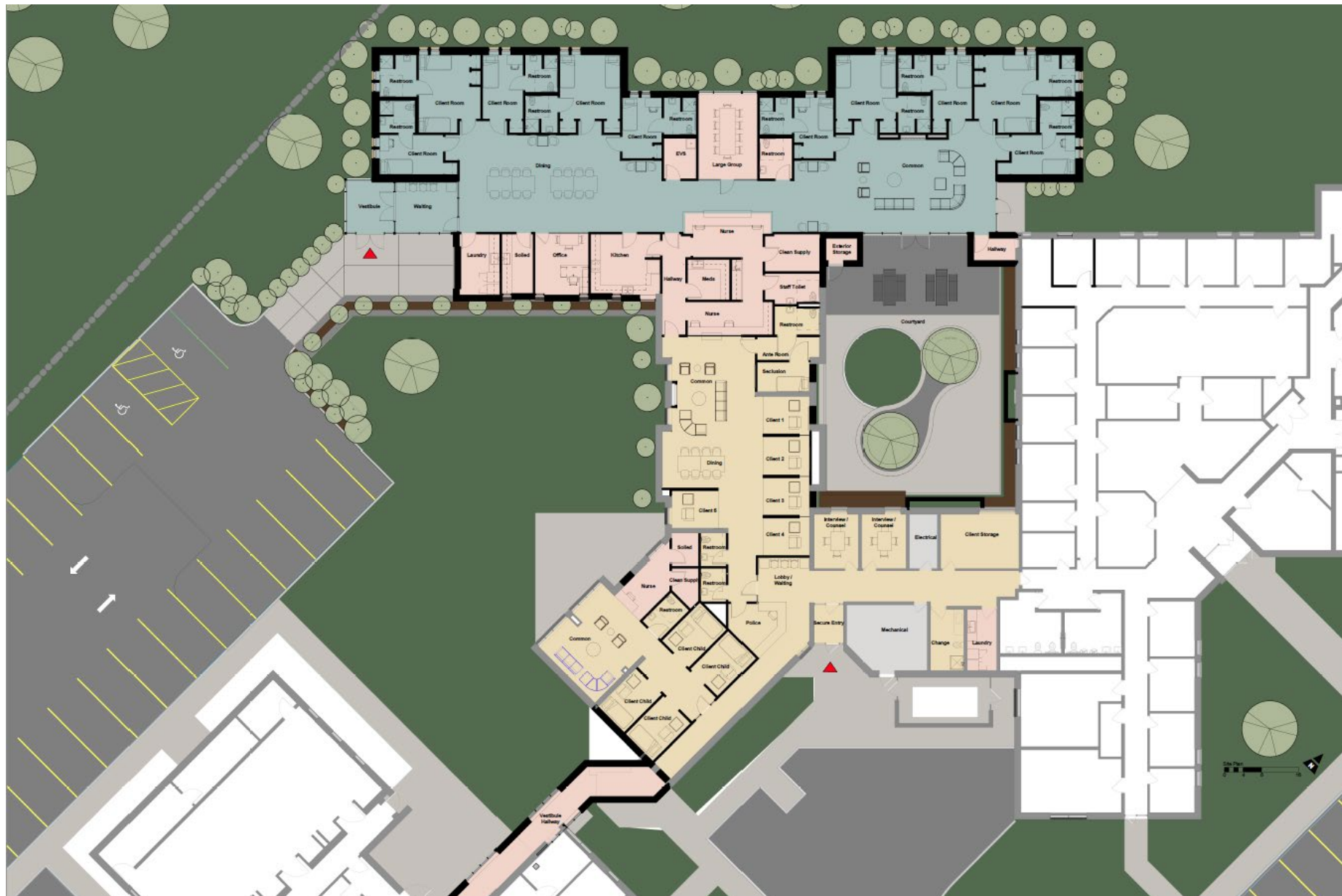


- Mobile Response and Stabilization Services (MRSS)
 - Serves youth and their families up to 21 years of age
 - Provide services for 6 weeks
 - Coordinate with youth and families for long term outpatient services when needed
 - Complete CANS Assessment to determine eligibility for Ohio Rise CME
 - Coordinate with Ohio Rise CME



Future of Coleman Crisis Services

- 5 23-hour Involuntary Hold Beds for Adults
- 4 youth and family beds
- 10 CSU rooms with up to 14 beds
- Secure outdoor sanctuary for CSU
- 24/7 Walk-In BH Urgent Care Access
- 2 Voluntary Beds















QUESTIONS?